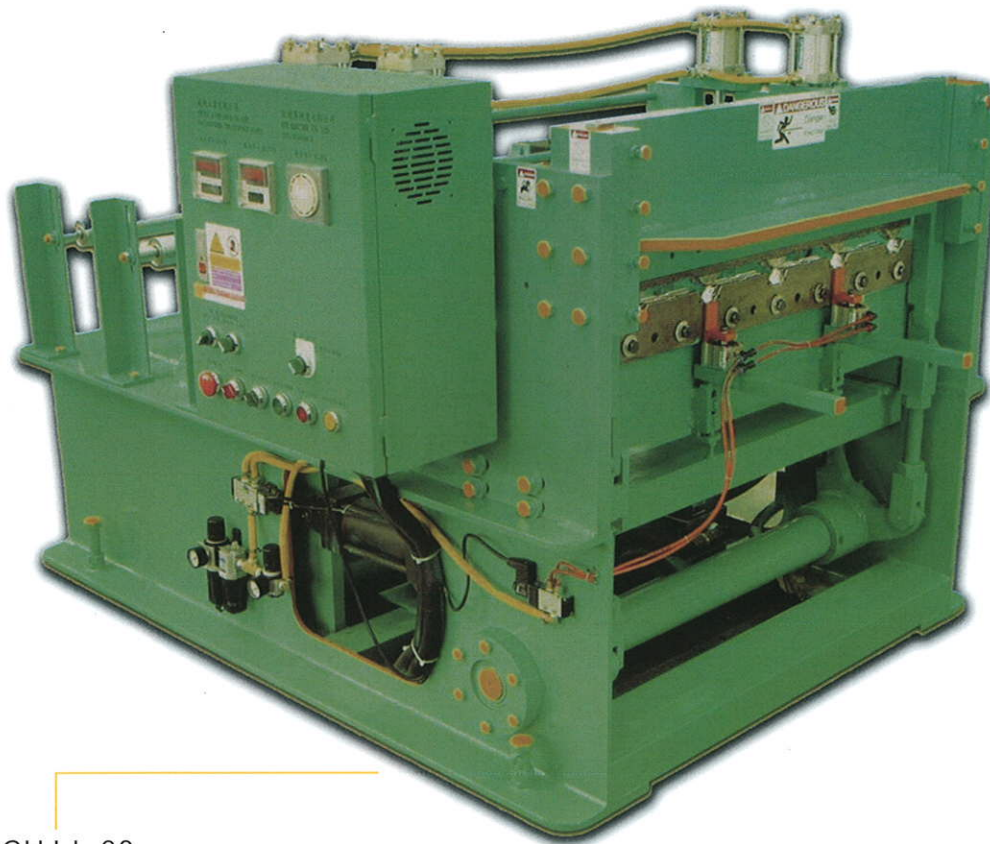


# 臥式尾端彎曲機

HORIZONTAL TYPE CRIMPING MACHINE

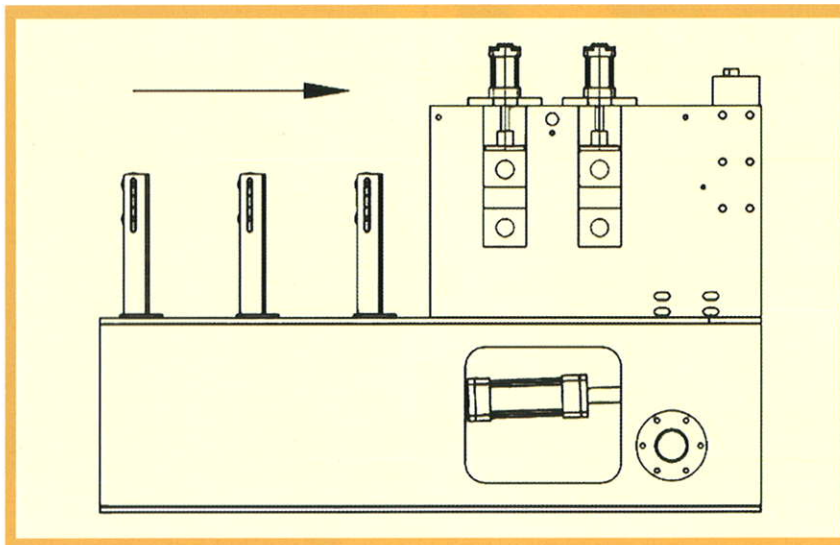


● CHJ-L-38

Model//CHJ-L-38

此種機械是將成型好之屋面鋼板經過折彎模，利用油壓方式壓出橫紋，而壓出的間隔大小決定成品的大小彎度，兼具小彎及大彎的弧度特性適用於建築物沿口、停車亭、及屋頂圓弧造型之變化而所精心設計出之彎曲機。此款機型只能壓彎單側，不能壓彎雙側。

This machine is used to crimp the rollformed sheet to be curved by hydraulic mald. The distance between each pressing will decide the radius of crimped products. You can have samll radius and large radius in the machine by key n different distance between each pressing. This machine only can crimp one side, not both sides.



鐵板厚度 SHEET THICKNESS	0.3~0.8mm
壓彎速度 FORMING SPEED	1~10M PER MINUTE
動力馬達 MOTOR OUTPUT	5~7hp
全長 LENGTH	L:1.7M
全寬 WIDTH	W:1.3M
全高 HELGHT	H:1.2M

